



Holiday Inn
London - Wembley

**Holiday Inn London – Wembley, Empire Way,
Wembley, Middlesex, HA9 8DS**

T: 020 8902 8839

E: events@hiwembley.co.uk

W: hiwembley.co.uk



Henley Suite

An attractive room ideal for small Board Meetings, interview panels and away-days. It hosts up to **30 delegates cabaret style and 13 Boardroom style**. The room at our Wembley arena hotel is fully **air-conditioned**, has **free Wi-Fi** and **natural daylight** with blackout if required. There is a spacious conference lobby which is ideal for use as a welcome area and registration desk, or for breaks and drinks. Book one of our competitively priced conference packages at our Wembley stadium hotel and everything you need for a successful event will be on hand. We have a dedicated Business Centre to help with all your printing and copying needs.



**Call our Conference Team on
020 8902 8839**

Henley Suite

| | |
|----------------------|-----|
| Total m ² | 38 |
| Ceiling height (m) | 2.4 |



Capacity

| | |
|------------------------|----|
| Theatre | 30 |
| Cabaret | 15 |
| Classroom | 16 |
| Boardroom | 12 |
| U-Shape | 14 |
| Banquet (tables of 10) | 30 |
| Reception | 30 |

| | |
|------------------|----------|
| Natural Daylight | Yes |
| Blackout Window | Yes |
| Air Conditioning | Yes |
| Onsite parking | 250 cars |



Nearby Stations

Wembley Stadium and Wembley Central



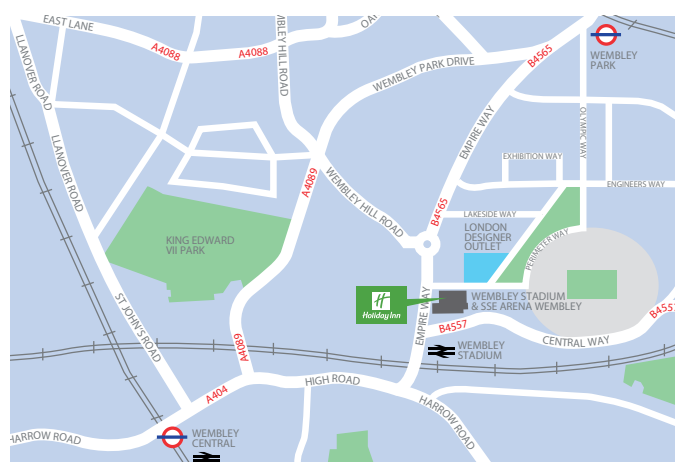
Nearby Underground Stations

Wembley Park and Wembley Central



Motorways

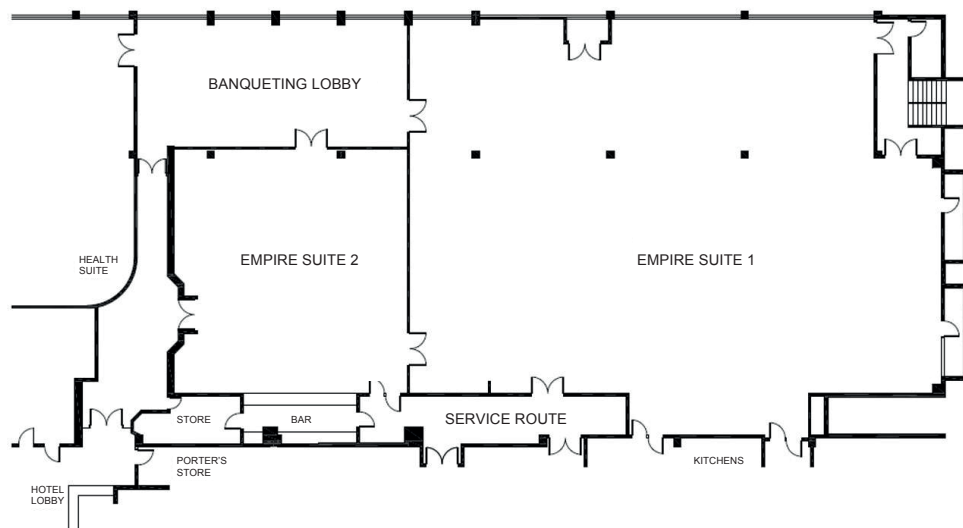
The Wembley arena hotel is also within easy reach of the North Circular, M1, M4, M40 and the M25.



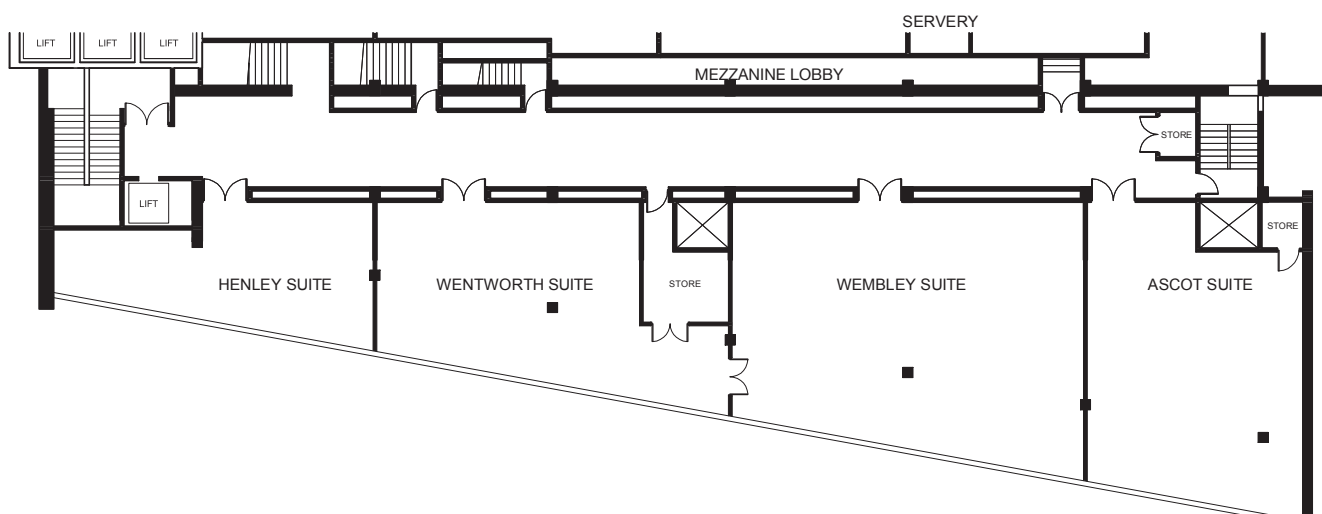
All our meeting rooms at a glance

| Meeting Room | Total m ² | Ceiling Height (m) | Theatre | Cabaret | Classroom | Boardroom | U-Shape | Banquet (tables of 10) | Reception | Natural Daylight | Blackout Window | Air Con | Floor |
|---------------------|----------------------|--------------------|---------|---------|-----------|-----------|---------|------------------------|-----------|------------------|-----------------|---------|--------|
| Empire Suite 1 | 544 | 3.5 | 500 | 240 | 240 | 100 | 90 | 350 | 450 | Y | Y | Y | Ground |
| Empire Suite 2 | 155 | 3.5 | 100 | 70 | 50 | 30 | 30 | 80 | 100 | N | Y | Y | Ground |
| Entire Empire Suite | 800 | 3.5 | 700 | 320 | 300 | 150 | 140 | 500 | 500 | Y | Y | Y | Ground |
| Wembley Suite | 162 | 2.4 | 120 | 80 | 48 | 30 | 40 | 100 | 140 | Y | Y | Y | Mezz |
| Ascot Suite | 97 | 2.4 | 80 | 40 | 32 | 24 | 24 | 70 | 100 | Y | Y | Y | Mezz |
| Wentworth Suite | 81 | 2.4 | 65 | 40 | 28 | 24 | 20 | 60 | 80 | Y | Y | Y | Mezz |
| Henley Suite | 38 | 2.4 | 30 | 15 | 16 | 12 | 14 | 30 | 30 | Y | Y | Y | Mezz |
| Boardroom | 30.1 | 2.5 | - | - | - | 14 | - | - | - | Y | Y | Y | 1st |
| Syndicate | 26.3 | 2.4 | - | - | - | 6 | - | - | - | Y | Y | Y | 1st |

Ground Floor



Mezzanine Floor



Call our Conference Team on
020 8902 8839